

The background is a dark blue gradient with a subtle pattern of small white dots. Overlaid on this are several white circular and semi-circular elements. On the left side, there is a large circular scale with tick marks and numbers ranging from 140 to 260. Other elements include dashed circles, solid circles, and curved arrows pointing in various directions, creating a sense of motion and technology.

# EMPOWERING CHURCH MINISTRY WITH AI

RANDY TRITZ, CTS-D

2050 SERVICES, LLC

BURLINGTON, WI



## GETTING TO KNOW ONE ANOTHER, OUR AGENDA

- What IS “Artificial Intelligence anyway?”
- Have you used Artificial Intelligence?
- Where can AI be used in Ministry?
- What do you understand about AI?
- Identifying Roles in your parish
  - Administration
  - Liturgical/Music
  - Religious Formation
- Round Table Discussions and input

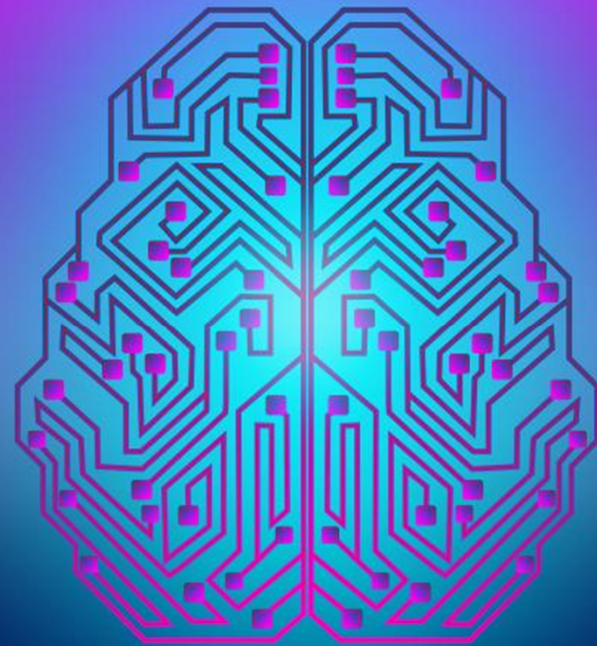
Join at [mentimeter.com](https://mentimeter.com) | use code 57097232

# How do you Identify your role



# WHAT IS ARTIFICIAL INTELLIGENCE

- What is Generative AI and how does it work?
- Where do you currently see/use Artificial intelligence?
  - Alexa, Google, Siri.....????
  - Gmail,
  - Grammarly
  - Netflix
  - Chat GPT
  - Other?



# HARNESSING THE POWER OF AI

- Streamlining operations
- Deepen spiritual connections
- Extending reach
- Positively impacting lives
- Data Driven Decision Making
- Personalized Outreach
- Efficient Resource Allocation
- Ultimately enhancing the mission

# USING AI TO ENHANCE YOUR MINISTRY

- Homily Content Generation
- Automate Administrative Tasks
- Social Media Management
- Communications
- Create Prayer Service





## GOVERNANCE...KNOW BEFORE YOU GO...

- Defining responsibilities and consequences
- Ethical pros and cons (plagiarism)
- Legal & Employment Impact
- Liturgical
- Music (copywrite)



## DISCUSSION— YOUR THOUGHTS?

- Thoughts about using AI?
  - Apprehensions
  - Excitement
  - How to plan moving forward?
- How can you envision using AI?
  - THOUGHTS
  - How do you envision preparing your parish to use AI?



## TOOLS & RESOURCES

- CHATGPT
- Mid Journey
- Tome
- Eleven Labs
- Chat Base
- Sermons.Tech
- Reclaim
- Otter.AI
- Synthesia
- Assembly.AI
- ? Others
- Pulpit.AI
- Metachurchbook.com
- Magisterium AI
- Bible Hub
- Catholic Chat
- Jasper
- Poe.com



# THOUGHT PROVOKING CONSIDERATIONS.... ONLY THE BEGINNING

- Approaching AI by putting one's head in the sand will not serve the ministry of the Church well in the future.
- We all need to create a space to embrace open dialogue to better understand and question the challenges and opportunities that arise from integration of AI into modern life, and the church
- How should your Church address AI?
  - Ignore and reject?
  - Explore and utilize?

# WHAT WILL YOU DO?

- Research other resources?
- Further questions?



I SINCERELY HOPE YOU GAINED  
SOME INSIGHT TO TAKE WITH YOU  
TODAY!

*Thank you!*

Randy Tritz, CTS-D  
2050 Services, LLC  
Burlington Wisconsin  
[rstritz@gmail.com](mailto:rstritz@gmail.com)  
312-310-4306